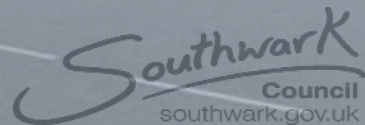
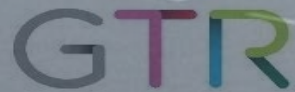


APPENDIX 1

# Peckham Rye Station Upgrade – The Case for a Southwark Contribution towards the upgrade costs



## **Peckham Rye Station Upgrade – The case for a Western Station Entrance**

- **The existing station entrance is overcrowded with users queueing in the morning peak to enter**
- **30% of station users will use a new Western entrance, relieving the current station entrance**
- **100m walking time saving for those users**
- **New raised path provides an improved, safer, accessible walking route to new Station Entrance and businesses Dovedale Court**
- **New raised traffic table on Blenheim Grove provides level access across street to bus stops**
- **New sewer connection from Blenheim Grove resolves drainage issues in Dovedale Court**
- **Encourages further development of Dovedale Court, in line with Southwark Council plan for the area**
- **New attractive viaduct arches for let**
- **Arches will benefit from improved outside space**
- **Access maintained to Dovedale Court with provision of turning head.**

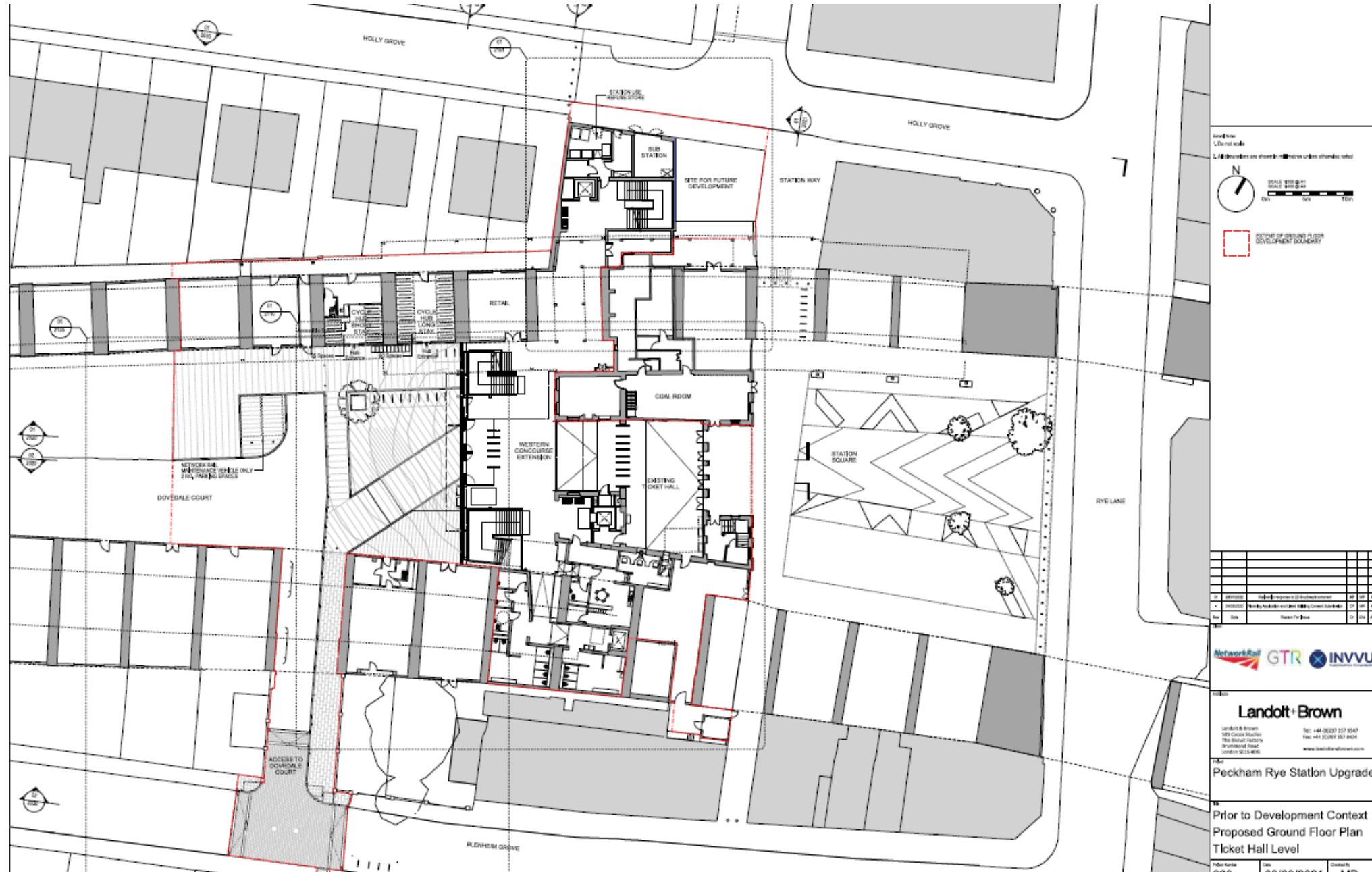
**Peckham Rye Station Upgrade – Image of new Western Entrance (view arriving access path)**



# Peckham Rye Station Upgrade – Image of new Western Entrance (from Dovedale Court)



# Peckham Rye Station Upgrade – Plan showing new Western Entrance



Level from  
1. Do not scale  
2. All dimensions are shown in metres unless otherwise noted

N

SCALE 1:100  
0m 10m 20m

EXTENT OF PROPOSED FLOOR DEVELOPMENT BOUNDARY

NO	REVISION	DATE	BY	CHECKED BY
1	ISSUED FOR PERMITTING	07/07/2024	...	...
2	ISSUED FOR TENDER	07/07/2024	...	...
3	ISSUED FOR CONSTRUCTION	07/07/2024	...	...



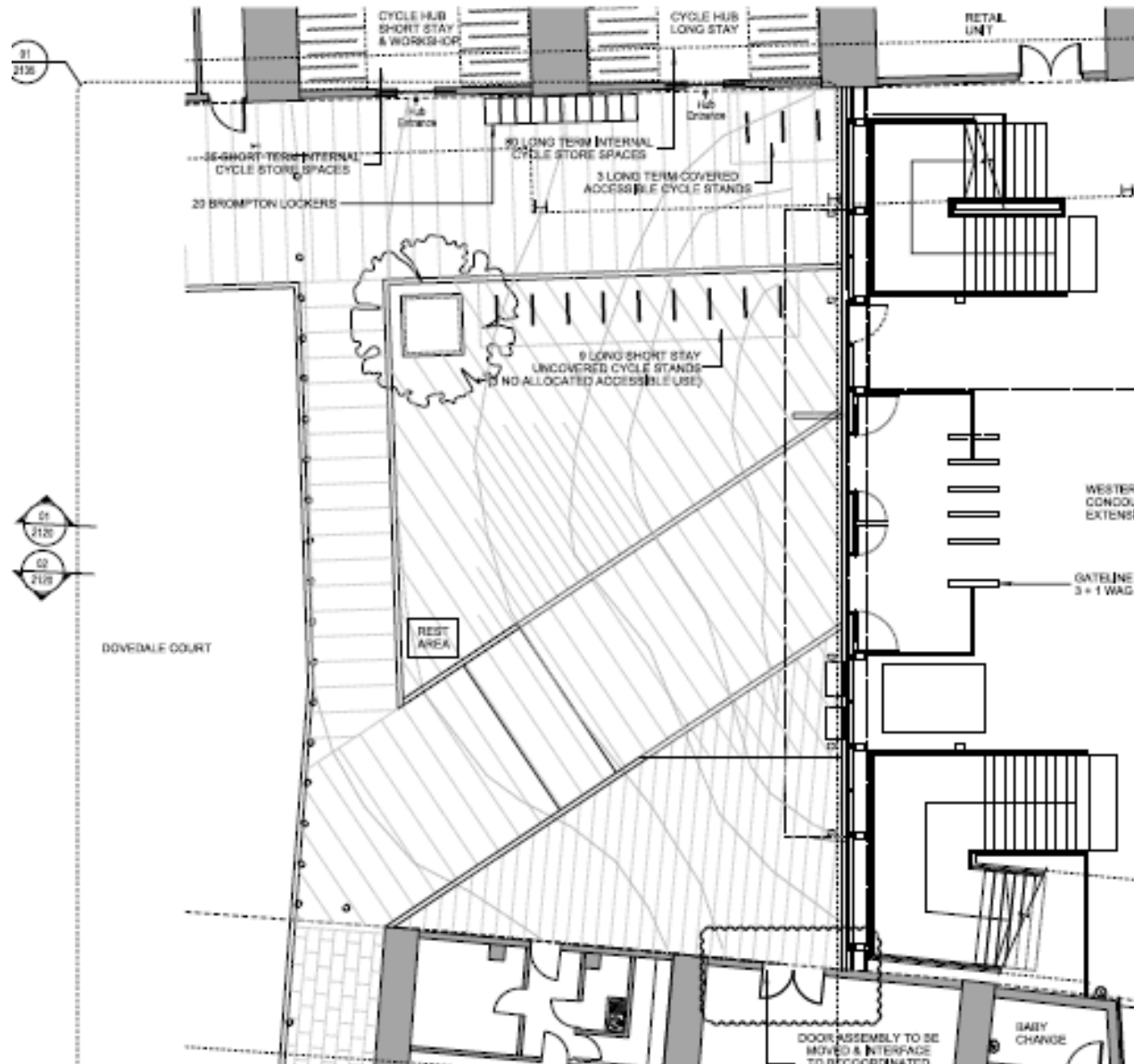
**Landolt + Brown**  
 Landolt + Brown  
 303 Colindale Avenue  
 The Colindale Station  
 Drayton Road  
 London N2 2 7JG  
 Tel: +44 (0)203 227 9547  
 Fax: +44 (0)203 227 9504  
 www.landoltandbrown.com

Peckham Rye Station Upgrade

Prior to Development Context  
 Proposed Ground Floor Plan  
 Ticket Hall Level

Project Name	Doc No	Drawn	Checked
Peckham Rye Station Upgrade	...	...	...

## Peckham Rye Station Upgrade – Closer look at Western station entrance and forecourt



- New western station entrance with attractive façade
- 3+1 ticket gates for access (passive provision for more)
- New paved western public forecourt (space for Brick Brewery), with HVM protection.
- New raised, safer access path for Dovedale Court
- New secure cycle hub
- Additional external Sheffield cycle stands
- Newly modified arches for let

## 8. Overall AFC – showing Southwark contribution towards whole.

Funding required for full programme													
Funder	Price base	CP6					CP7					CP8	Total
		19/20	20/21	21/22	22/23	23/24	24/25	25/26	26/27	27/28	28/29	29/30	
DfT RNEP	1Q24		0.506	0.604	0.320	0.101	2.873	7.474	2.970	14.765	16.327	1.484	<b>47.439</b>
Southwark											1.000		
Active England											0.259		
RHT											0.250		
GTR											0.120		
Arch Company											0.071		
<b>Grand total</b>											18.027		<b>49.139</b>